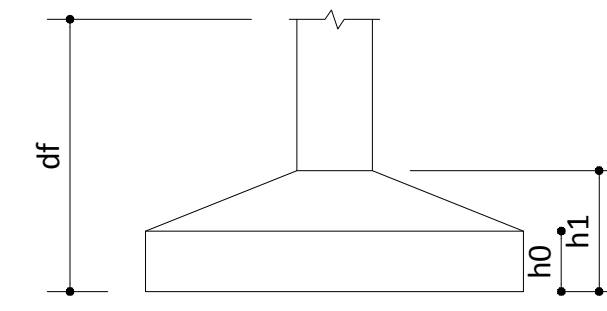


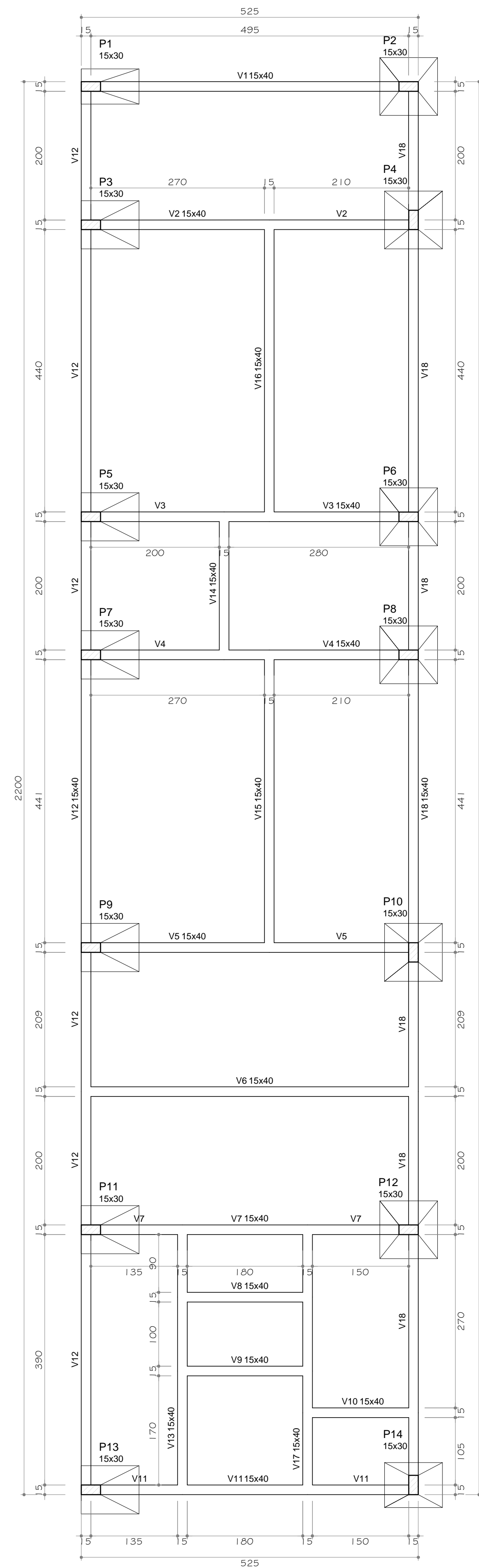
PLANTA DE LOCAÇÃO  
1:50

Pilar			
Nome	Seção (cm)	Carga Máx. (tf)	Carga Min. (tf)
P1	15x30	5.4	4.5
P2	15x30	5.9	5.1
P3	15x30	9.8	8.9
P4	15x30	10.5	9.7
P5	15x30	6.7	5.5
P6	15x30	9.1	8.0
P7	15x30	6.5	5.4
P8	15x30	9.0	7.9
P9	15x30	8.9	7.7
P10	15x30	11.0	10.0
P11	15x30	9.1	7.7
P12	15x30	12.4	11.1
P13	15x30	7.0	6.4
P14	15x30	6.2	5.6

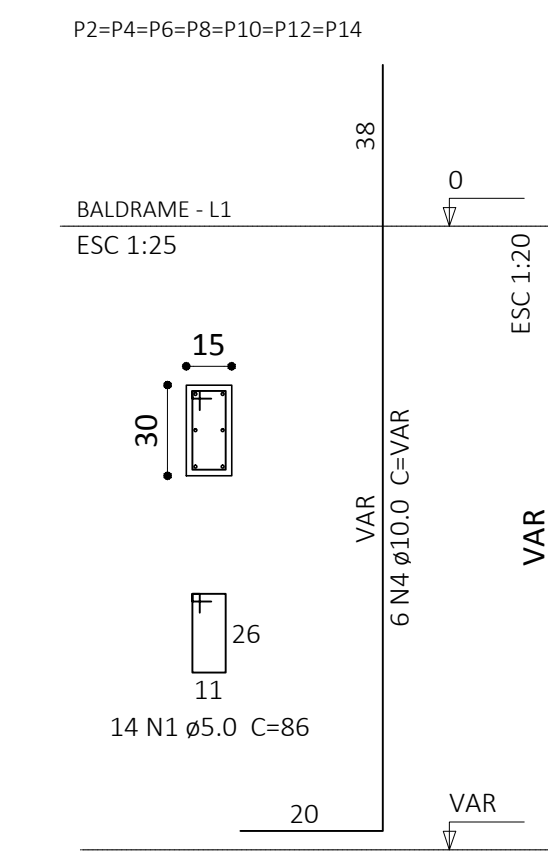
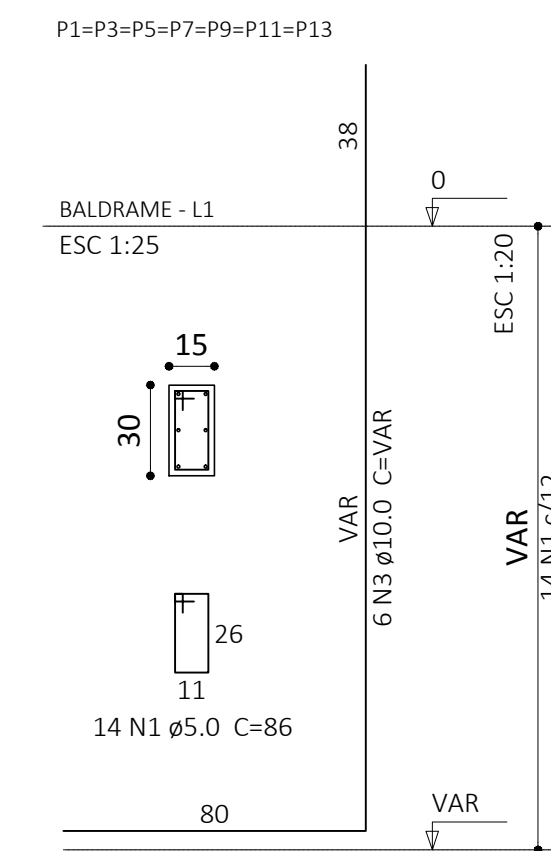
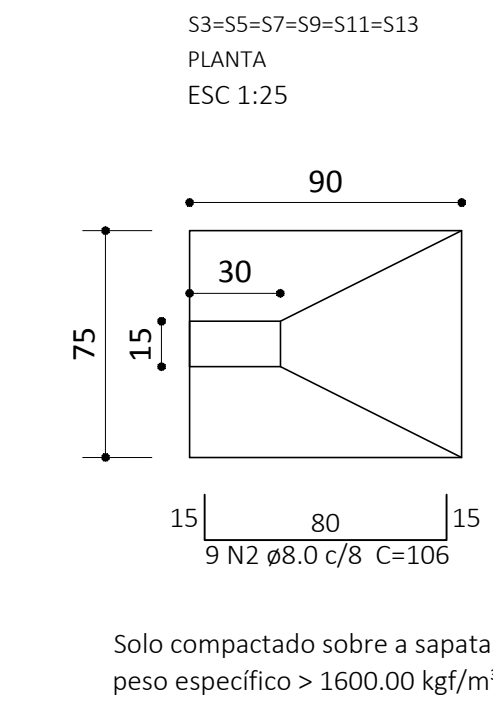
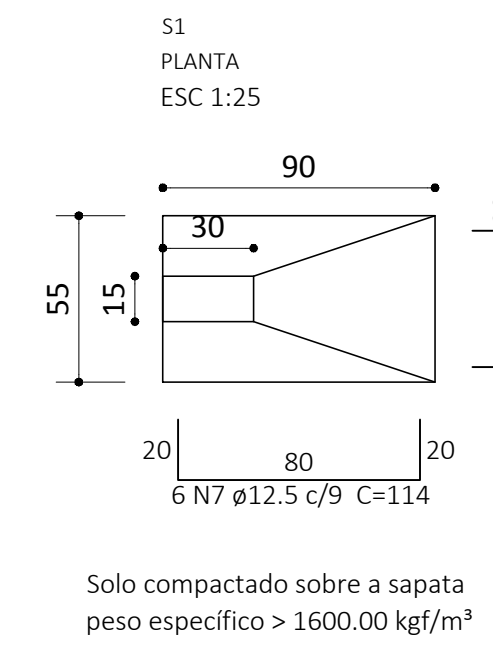


Vigas			
Nome	Seção (cm)	Elevação (cm)	Nível (cm)
V1	15x40	0	0
V2	15x40	0	0
V3	15x40	0	0
V4	15x40	0	0
V5	15x40	0	0
V6	15x40	0	0
V7	15x40	0	0
V8	15x40	0	0
V9	15x40	0	0
V10	15x40	0	0
V11	15x40	0	0
V12	15x40	0	0
V13	15x40	0	0
V14	15x40	0	0
V15	15x40	0	0
V16	15x40	0	0
V17	15x40	0	0
V18	15x40	0	0

Características dos materiais		
fck (kgf/cm²)	Ecs (kgf/cm²)	
250	2380000	



FORMA DO BALDRAME  
1:50



Relação do aço - COLARINHO  
P1 A P14

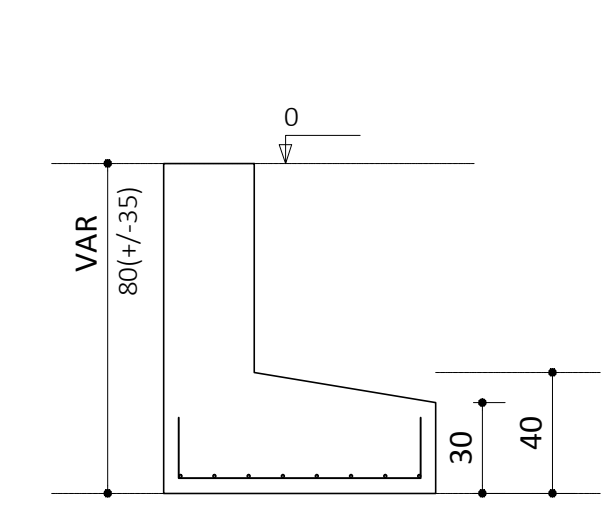
AÇO	N	DIAM	Q	UNIT (cm)	C.TOTAL (cm)
CA60	1	5.0	189	86	16254
CA50	3	10.0	42	VAR	VAR
CA50	4	10.0	42	VAR	VAR

Resumo do aço

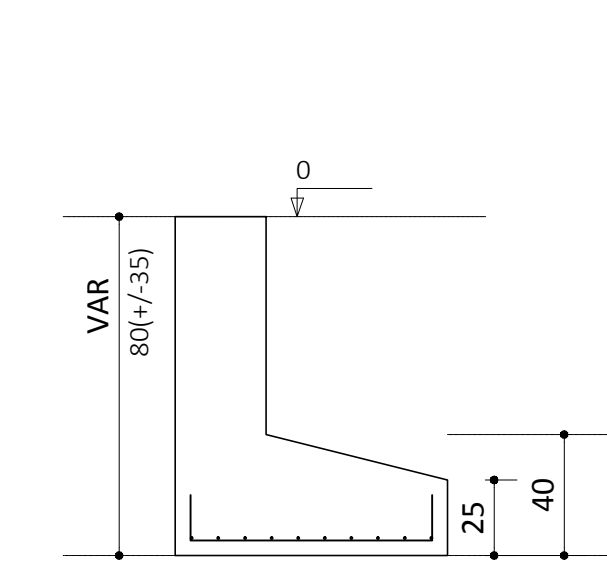
AÇO	DIAM	C.TOTAL (m)	PESO + 10% (kg)
CA50	10.0	193.1	130.9
CA60	5.0	162.5	27.5

Vol. de concreto total (C-25) = 1 m³  
Área de forma total = 20.03 m²

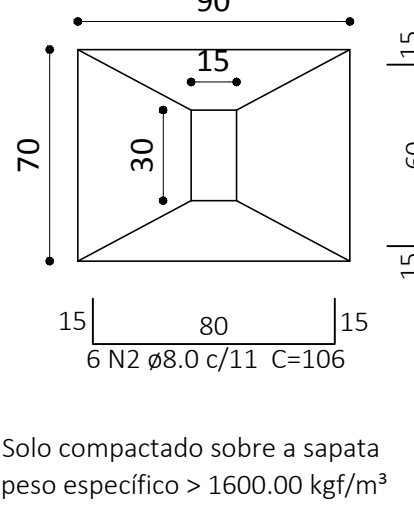
CORTE ESC 1:25



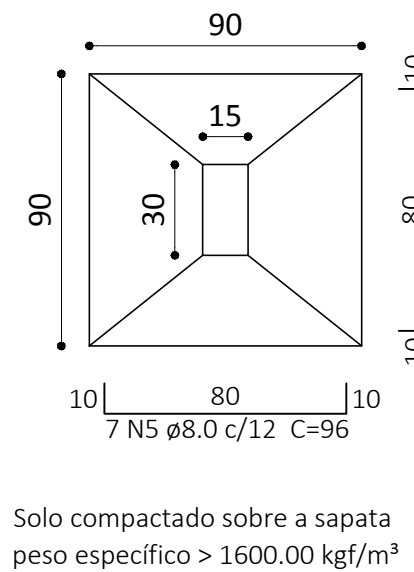
CORTE ESC 1:25



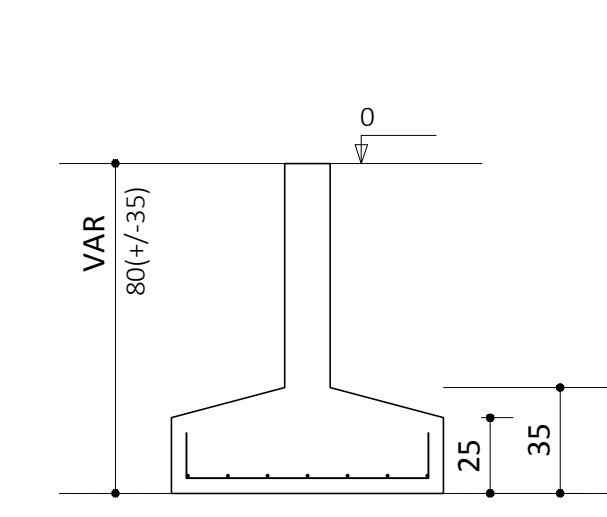
S14 PLANTA ESC 1:25



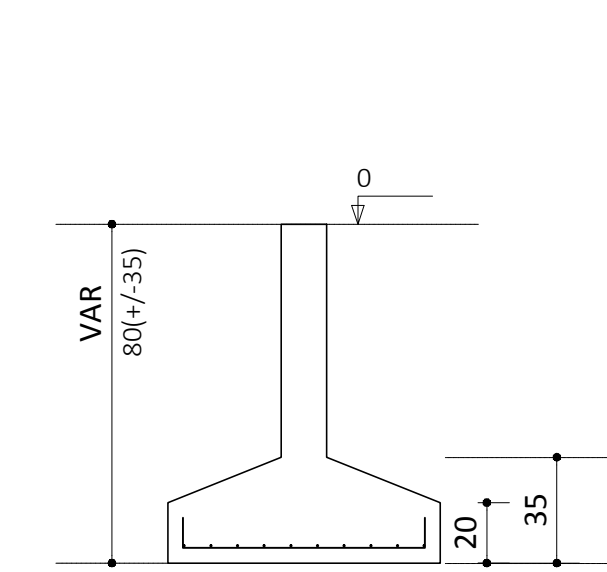
S2=S4=S6=S8=S10=S12 PLANTA ESC 1:25



CORTE ESC 1:25



CORTE ESC 1:25



Relação do aço

S1						S14					
AÇO	N	DIAM	Q	UNIT (cm)	C.TOTAL (cm)	AÇO	N	DIAM	Q	UNIT (cm)	C.TOTAL (cm)
CA50	1	6.3	60	97	5820	CA50	1	6.3	60	97	5820
CA50	2	8.0	60	106	6360	CA50	2	8.0	60	106	6360
CA50	3	8.0	7	86	602	CA50	3	8.0	7	86	602
CA50	4	8.0	60	91	5460	CA50	4	8.0	60	91	5460
CA50	5	8.0	42	96	4032	CA50	5	8.0	42	96	4032
CA50	6	10.0	8	80	640	CA50	6	10.0	8	80	640
CA50	7	12.5	6	114	684	CA50	7	12.5	6	114	684

Resumo do aço

AÇO	DIAM	C.TOTAL (m)	PESO + 10% (kg)
CA50	6.3	58,2	15,6
CA50	8,0	164,5	71,4
CA50	10,0	6,4	4,3
CA50	12,5	6,9	7,2

Vol. de concreto total (C-25) = 2.71 m³  
Área de forma total = 10.95 m²

OBS:

PREFEITURA:	INSS
ASS. RESPONSÁVEL TÉCNICO:	ASS. PROPRIETÁRIO (g)
FERRARI ARQUITETURA & ENGENHARIA CNPJ.: 26.722.864/0001-00	PREFEITURA MUNICIPAL DE RODEIO CNPJ.: 83.102.814/0001-64

PREFEITURA MUNICIPAL DE RODEIO

	GINÁSIO DE ESPORTE	ESCALA 1/50
	Rua Erwin Pacher, Bairro Rodeio 12, Rodeio/SC	DATA Setembro/2017
	LOCAÇÃO - BALDRAME SAPATAS COLARINHOS	ARQUIVO PMR.DWG
		FOLHA 01 07

ESTRUTURAL