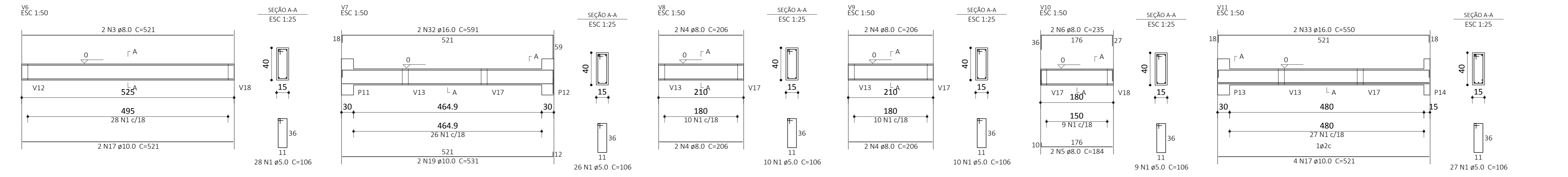


Relação do aço
V1 A V18

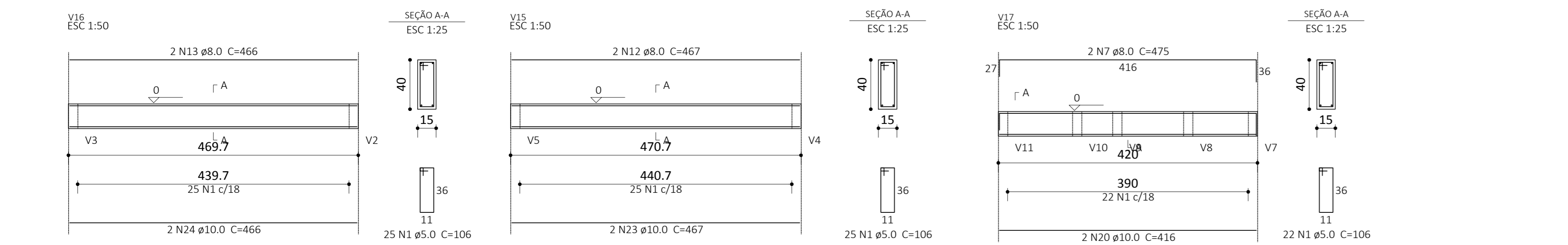
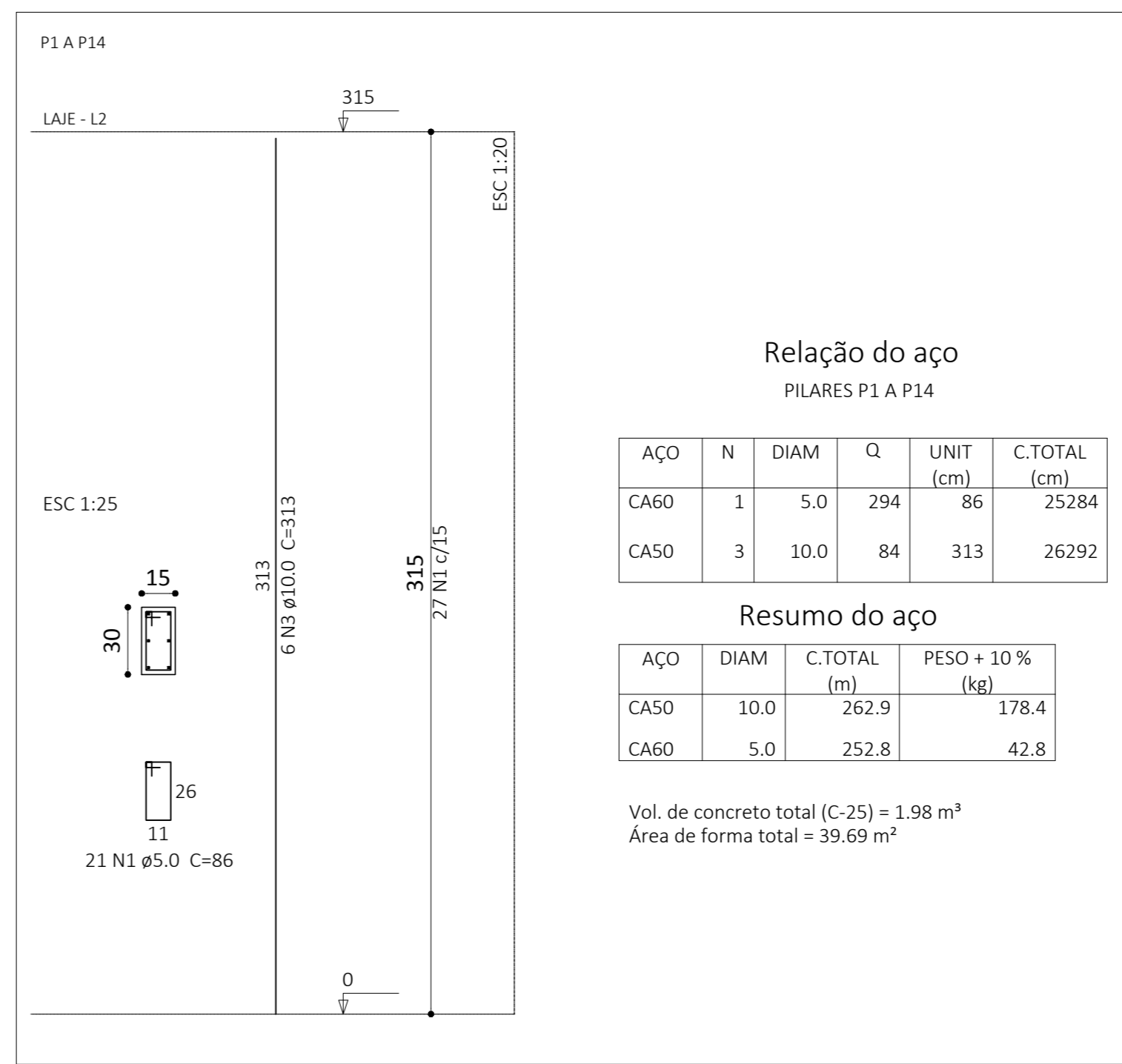
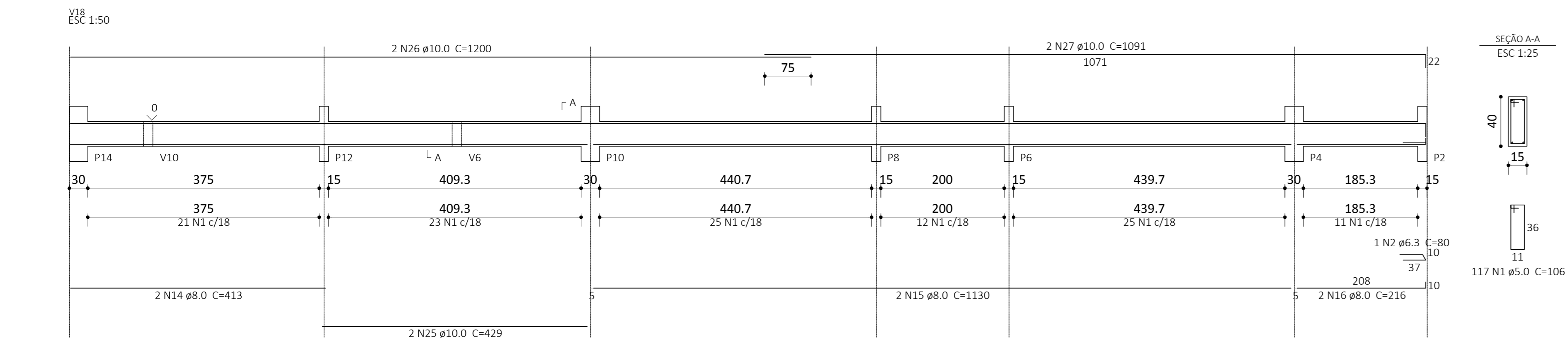
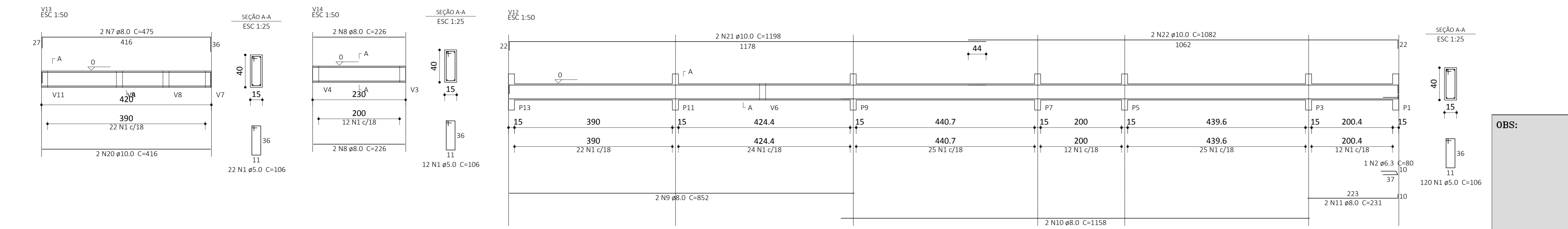
AÇO	N	DIAM	Q	UNIT (cm)	C.TOTAL (cm)
CA60	1	5.0	585	106	62010
CASO	2	6.3	2	80	160
	3	8.0	2	521	1042
	4	8.0	8	206	1648
	5	8.0	2	184	368
	6	8.0	2	235	470
	7	8.0	4	475	1900
	8	8.0	4	226	904
	9	8.0	2	852	1704
	10	8.0	2	1158	2316
	11	8.0	2	231	462
	12	8.0	2	467	934
	13	8.0	2	466	932
	14	8.0	2	413	826
	15	8.0	2	1130	2260
	16	8.0	2	216	432
	17	10.0	16	521	8336
	18	10.0	2	540	1080
	19	10.0	2	531	1062
	20	10.0	4	416	1664
	21	10.0	2	1198	2396
	22	10.0	2	1082	2164
	23	10.0	2	467	934
	24	10.0	2	466	932
	25	10.0	2	429	858
	26	10.0	2	1200	2400
	27	10.0	2	1091	2182
	28	12.5	2	585	1170
	29	12.5	2	565	1130
	30	16.0	2	572	1144
	31	16.0	2	574	1148
	32	16.0	2	591	1182
	33	16.0	2	550	1100



Resumo do aço

AÇO	DIAM	C.TOTAL (m)	PESO + 10 % (kg)
CASO	6.3	1.6	0.4
	8.0	162	70.3
	10.0	240.1	162.8
	12.5	23	24.4
	16.0	45.8	79.4
CA60	5.0	620.1	105.1

Vol. de concreto total (C-25) = 6.73 m³
Área de forma total = 106.49 m²



OBS:

PREFEITURA:	INSS
ASS. RESPONSÁVEL TÉCNICO	ASS. PROPRIETÁRIO (o)
FERRARI ARQUITETURA & ENGENHARIA CNPJ.: 26.722.864/0001-00	PREFEITURA MUNICIPAL DE RODEIO CNPJ.: 83.102.814/0001-64

PREFEITURA MUNICIPAL DE RODEIO

GINÁSIO DE ESPORTE

Rua Erwin Pacher, Bairro Rodeio 12, Rodeio/SC

Ferrari
Arquitetura & Engenharia
(47) 98402.7070 / 3384.1884

ESCALA: 1/50
DATA: Setembro/2017
ARQUIVO: FMR.DWG
FOLHA: 02/07

ESTRUTURAL

VIGAS BALDRAME
PILARES