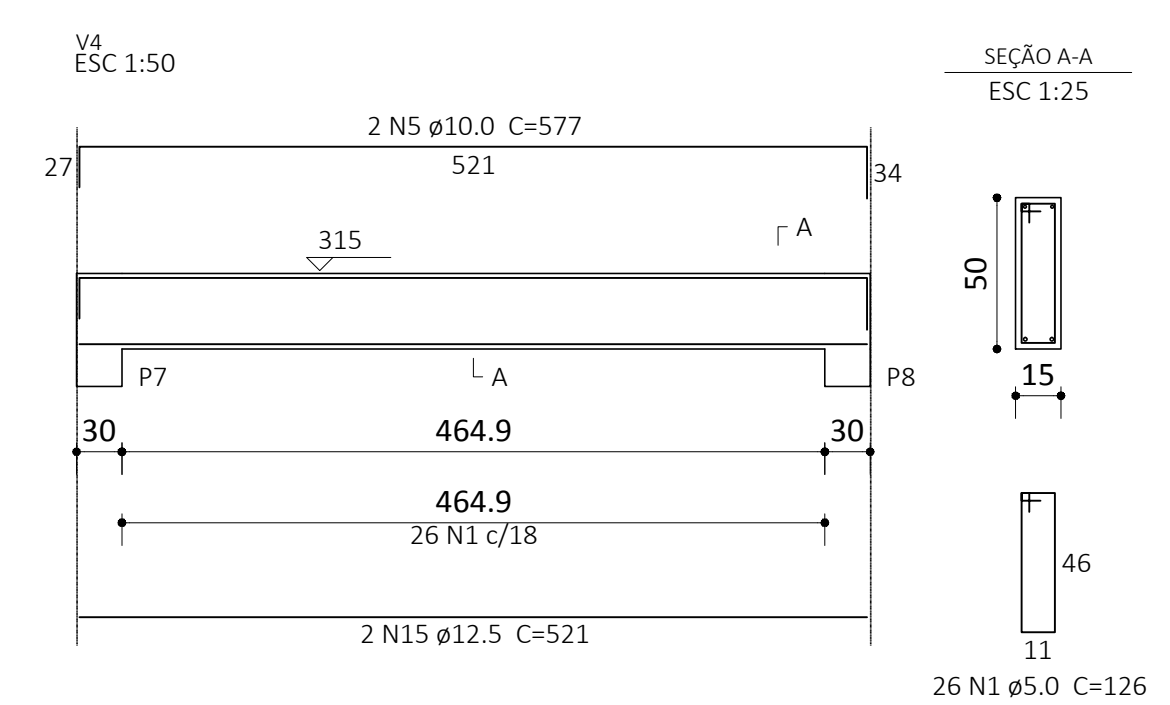
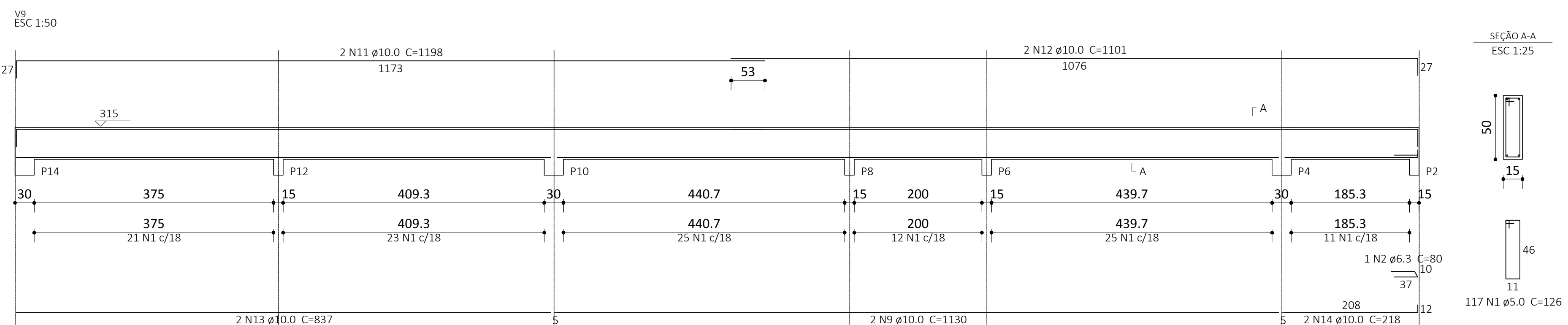
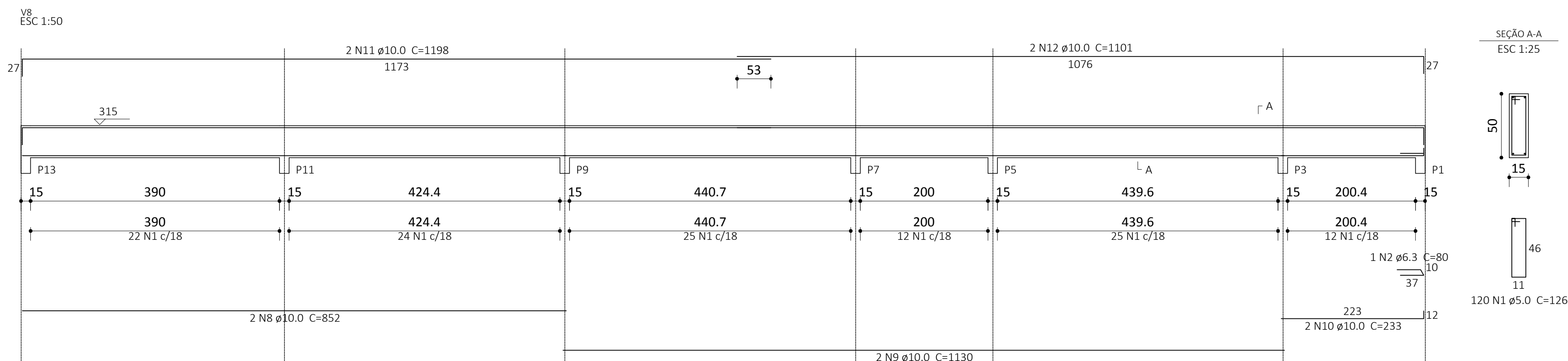
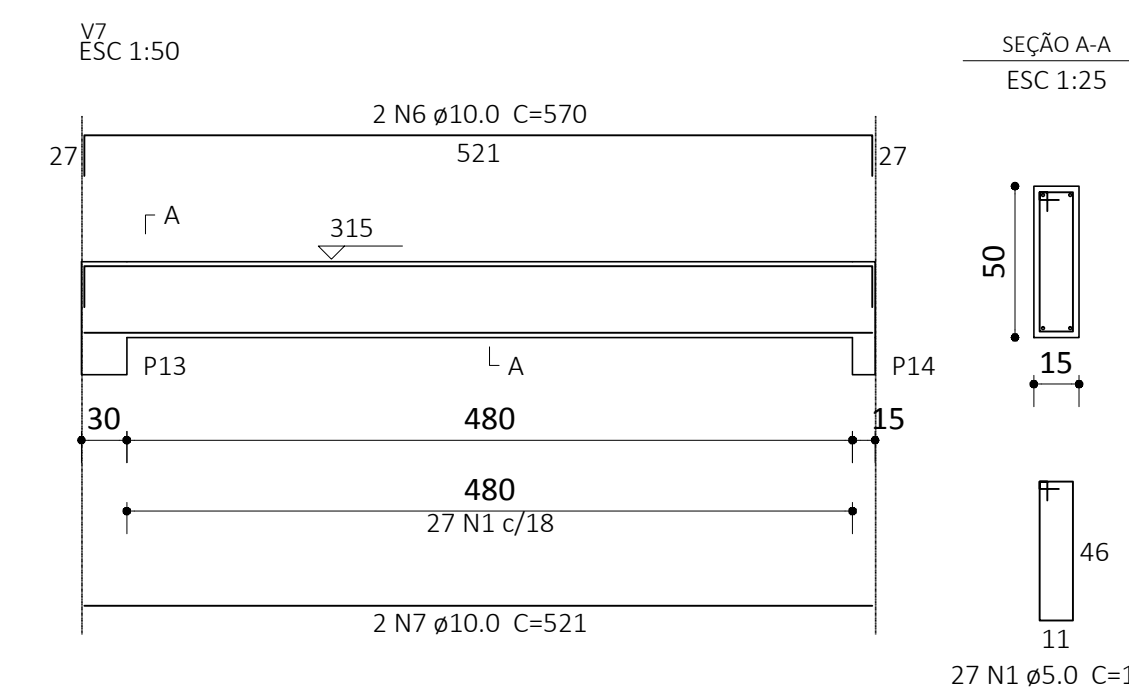
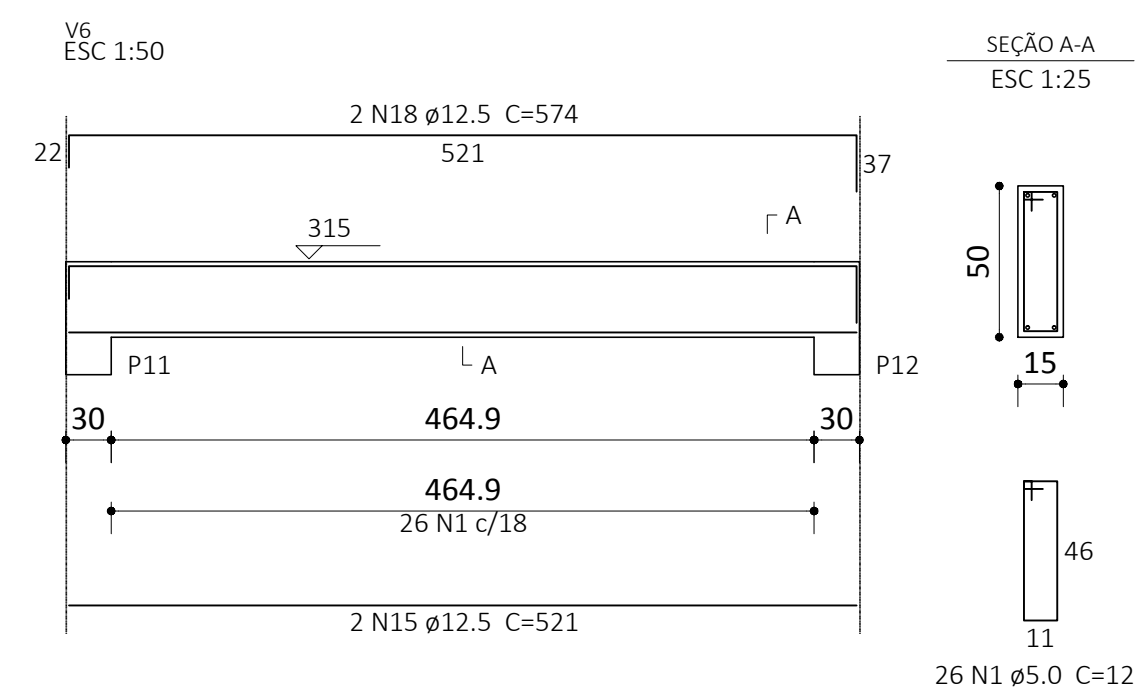
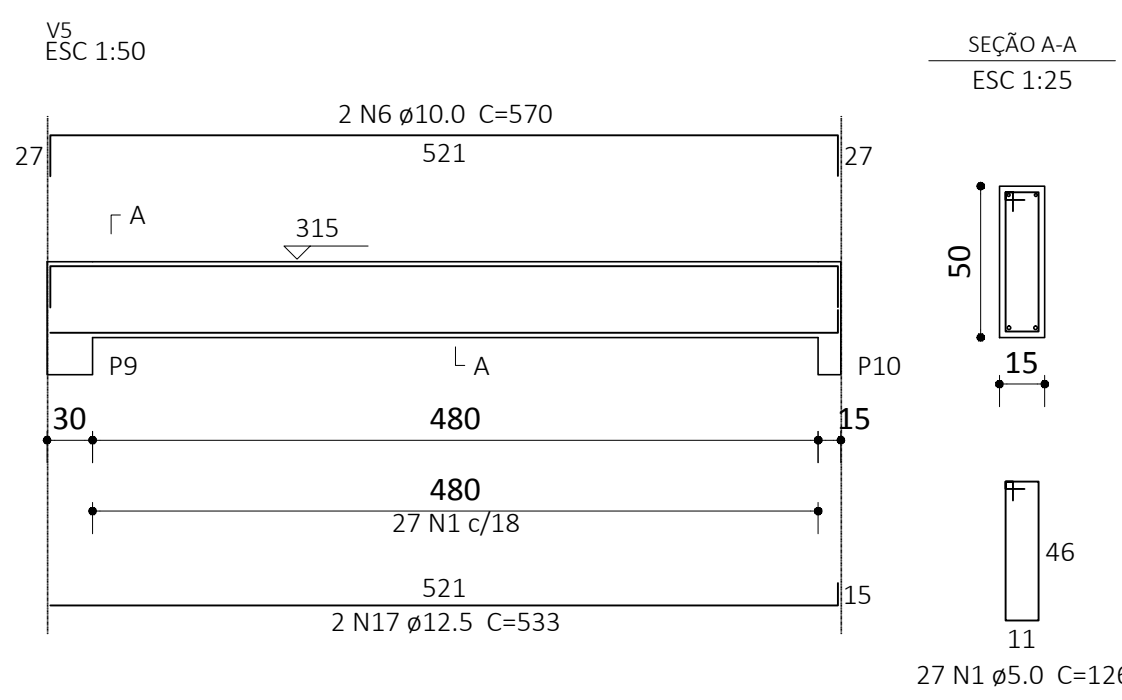
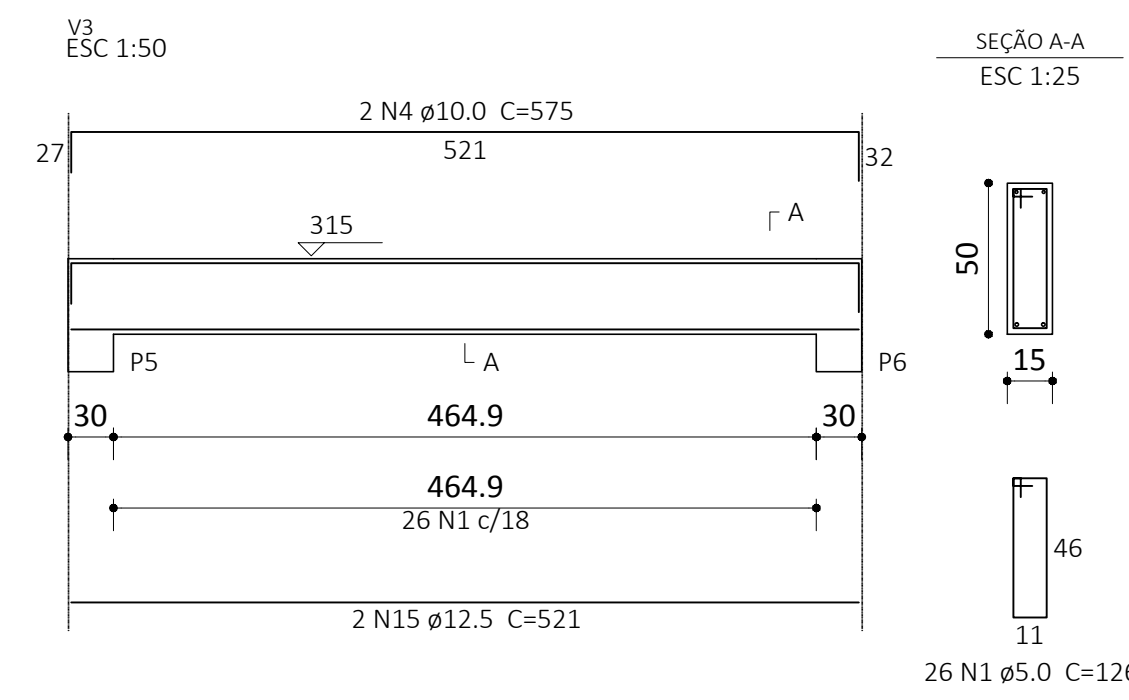
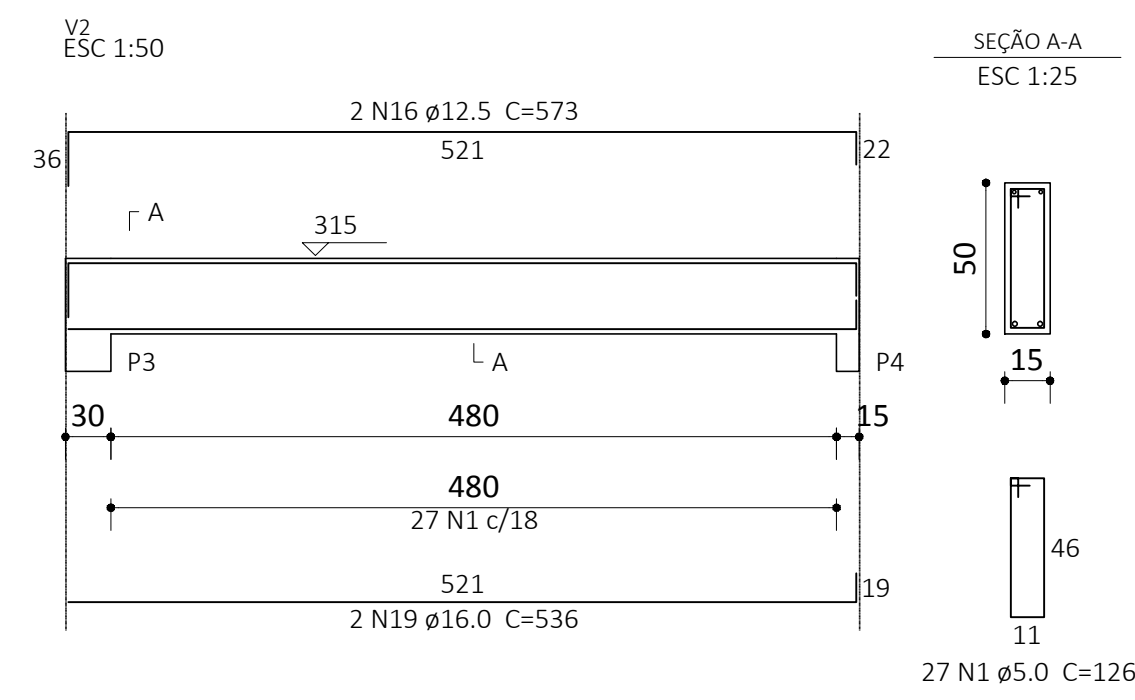
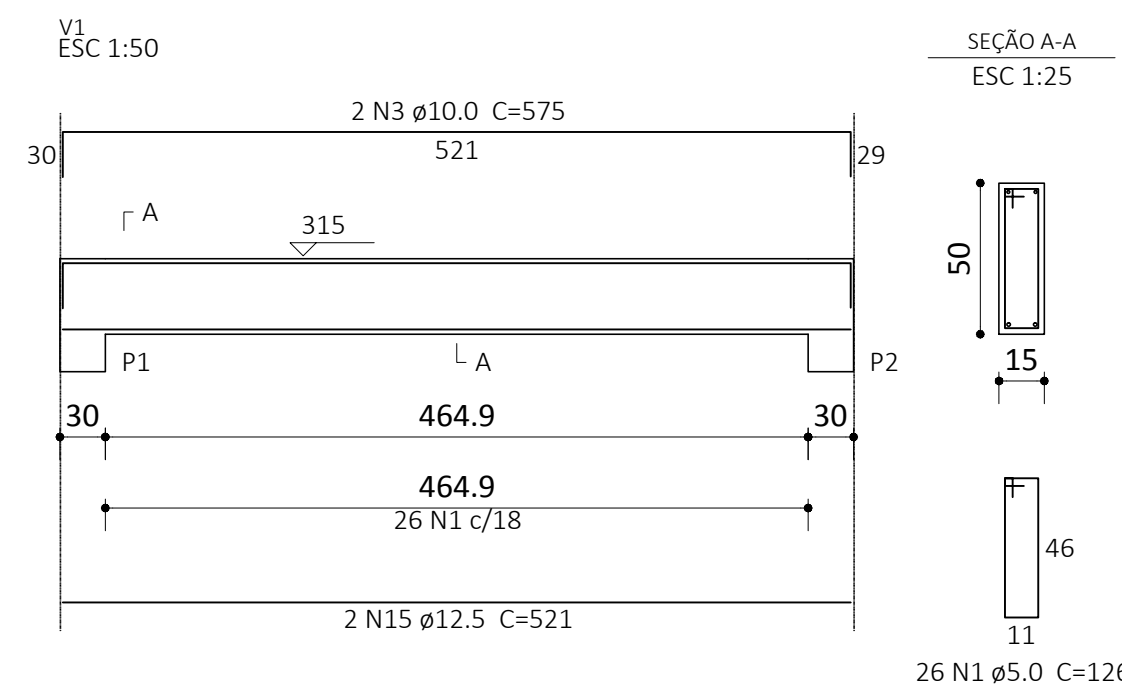


FORMA DA LAJE
1:50

Vigas			
Nome	Seção (cm)	Elevação (cm)	Nível (cm)
V1	15x50	0	315
V2	15x50	0	315
V3	15x50	0	315
V4	15x50	0	315
V5	15x50	0	315
V6	15x50	0	315
V7	15x50	0	315
V8	15x50	0	315
V9	15x50	0	315



Relação do aço

AÇO	N	DIAM	Q	UNIT (cm)	C.TOTAL (cm)
CA60	1	5.0	422	126	53172
CA50	2	6.3	2	80	160
	3	10.0	2	575	1150
	4	10.0	2	575	1150
	5	10.0	2	577	1154
	6	10.0	4	570	2280
	7	10.0	2	521	1042
	8	10.0	2	852	1704
	9	10.0	4	1130	4520
	10	10.0	2	233	466
	11	10.0	4	1198	4792
	12	10.0	4	1101	4404
	13	10.0	2	837	1674
	14	10.0	2	218	436
	15	12.5	8	521	4168
	16	12.5	2	573	1146
	17	12.5	2	533	1066
	18	12.5	2	574	1148
	19	16.0	2	536	1072

Resumo do aço

AÇO	DIAM	C.TOTAL (m)	PESO + 10 % (kg)
CA50	6.3	1.6	0.4
	10.0	247.8	168
	12.5	75.3	79.8
	16.0	10.8	18.6
CA60	5.0	531.8	90.2
PESO TOTAL			
CA50		266.8	
CA60		90.2	

Vol. de concreto total (C-25) = 6.06 m³
Área de forma total = 92.86 m²

OBS:

PREFEITURA:	INSS
ASS. RESPONSÁVEL TÉCNICO	ASS. PROPRIETÁRIO (g)
FERRARI ARQUITETURA & ENGENHARIA CNPJ: 26.722.864/0001-00	PREFEITURA MUNICIPAL DE RODEIO CNPJ: 83.102.814/0001-64

PREFEITURA MUNICIPAL DE RODEIO

GINÁSIO DE ESPORTE

Rua Erwin Pacher, Bairro Rodeio 12, Rodeio/SC

Ferrari
Arquitetura & Engenharia
471 98462-7570 / 3384.1894

ESCALA: 1/50
DATA: Setembro/2017
ARQUIVO: PMR.DWG
FOLHA: 03
07

ESTRUTURAL