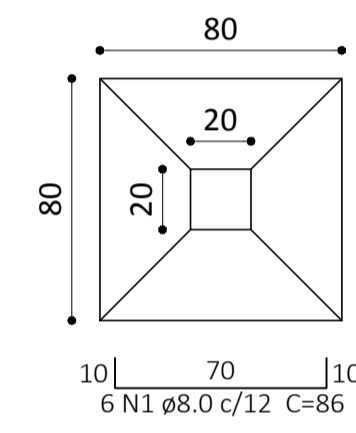
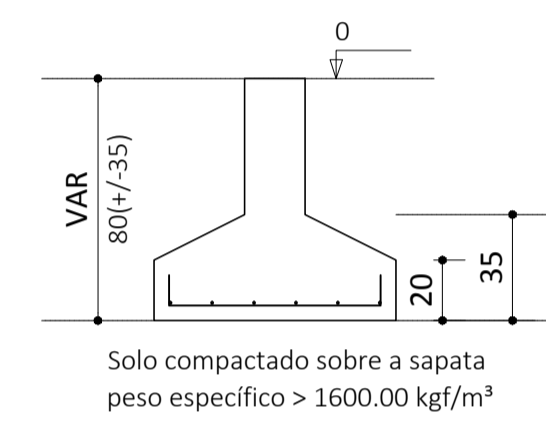


**FORMA DO PAVIMENTO BALDRAME**  
ESC 1:50

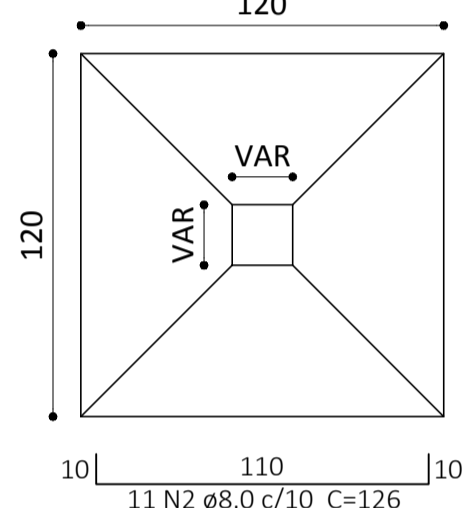
S1=S2=S3=S4=S5=S6  
PLANTA  
ESC 1:25



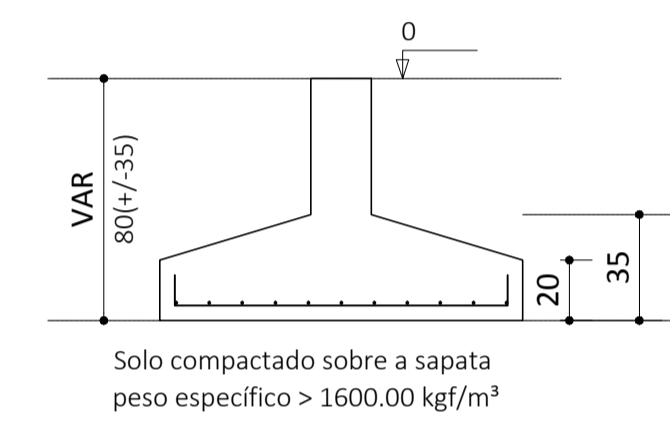
CORTE  
ESC 1:25



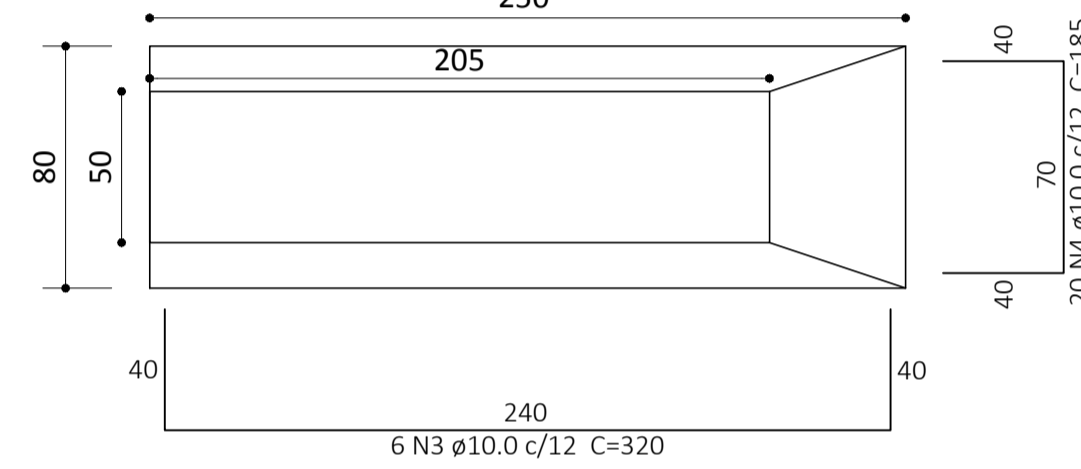
S7=S8=S9=S10=S11=S12=S14=S15=S16=S17  
PLANTA  
ESC 1:25



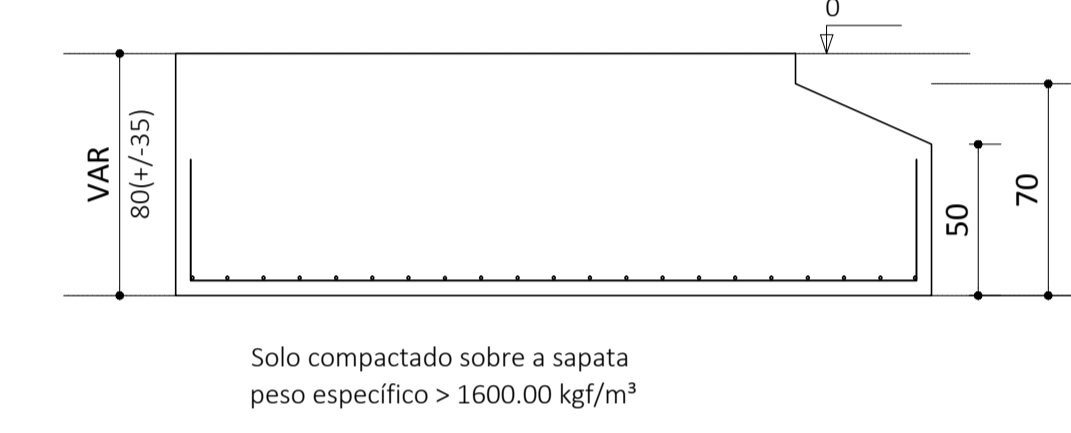
CORTE  
ESC 1:25



S13  
PLANTA  
ESC 1:25



CORTE  
ESC 1:25



Relação do aço

Sapatas					
AÇO	N	DIAM	Q	UNIT (cm)	C.TOTAL (cm)
CA50	1	8.0	72	86	6192
	2	8.0	220	126	27720
	3	10.0	6	375	2250
	4	10.0	20	185	3700

Resumo do aço

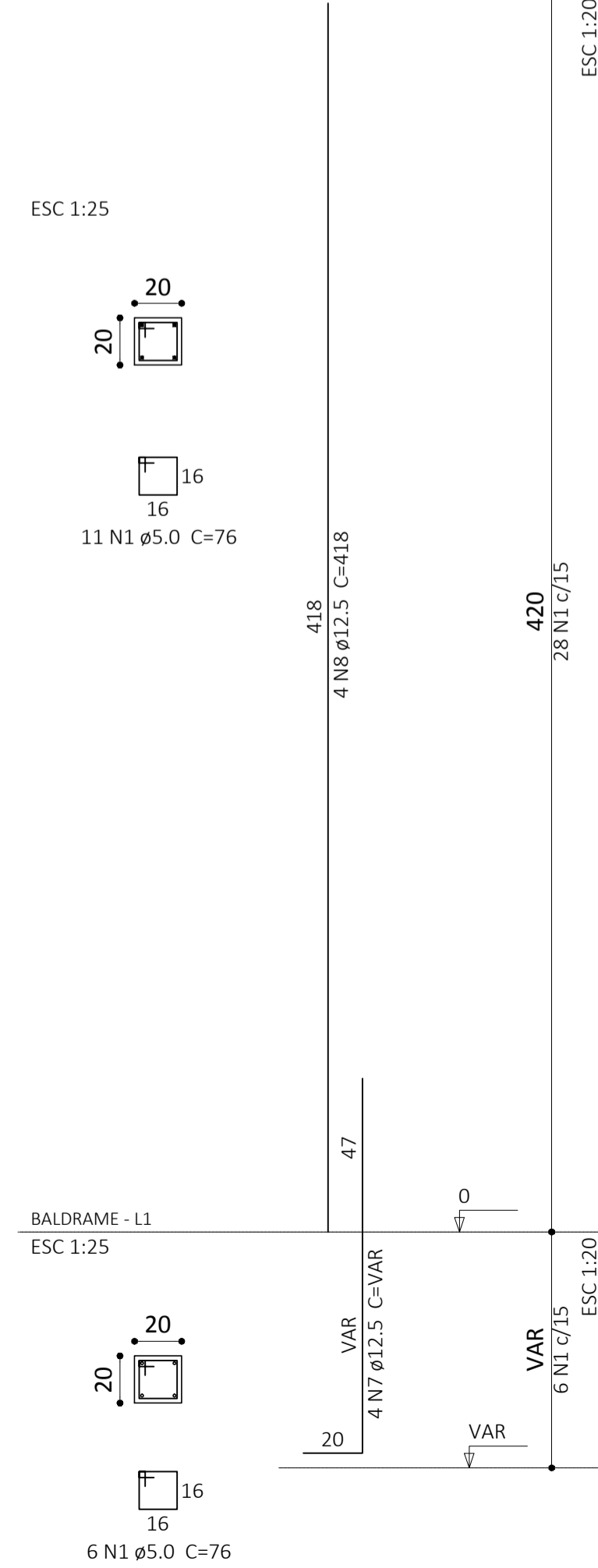
AÇO	DIAM	C.TOTAL (m)	BARRAS + 10% (unid)
CA50	8.0	339.2	31
	10.0	59.5	6

Vol. de concreto total (C-25) = 6.92 m³  
Área de forma total = 16.78 m²

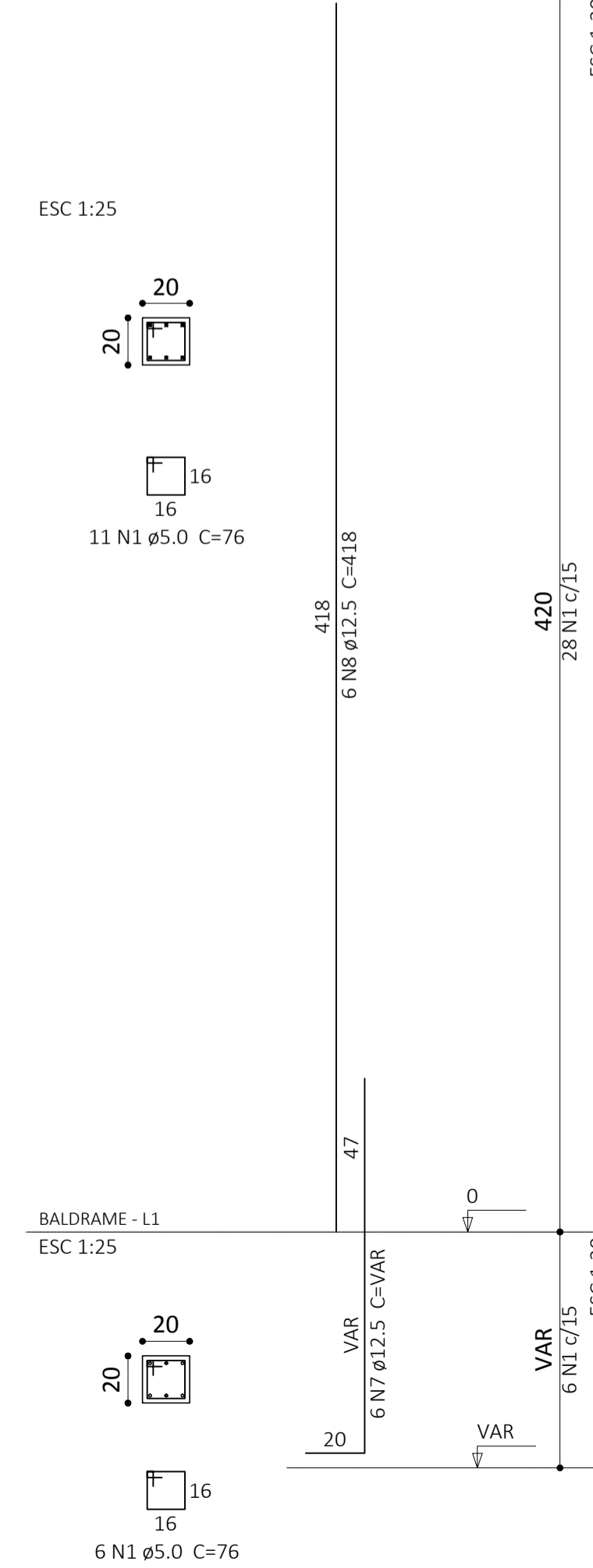
Vigas			
Nome	Seção (cm)	Elevação (cm)	Nível (cm)
V1	20x50	0	0
V2	20x50	0	0
V3	20x50	0	0
V4	20x50	0	0
V5	20x50	0	0
V6	20x50	0	0
V7	20x50	0	0
V8	20x50	0	0
V10	20x50	0	0

Características dos materiais	
fck (kgf/cm²)	Ecs (kgf/cm³)
25.0	2300.00

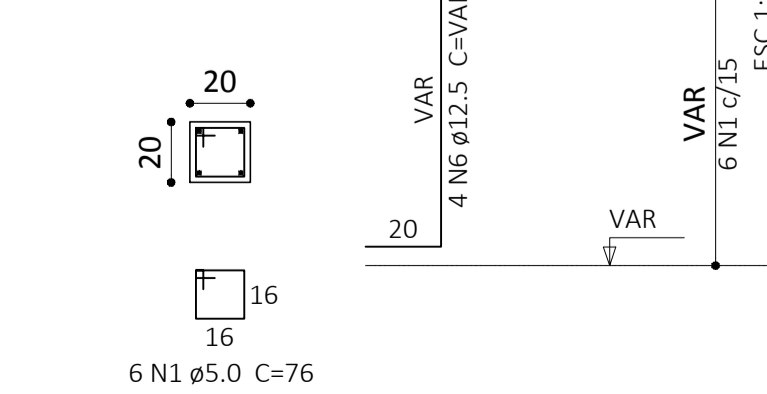
P7-P8-P11-P12  
ARQUIBANCADA - L2  
ESC 1:25



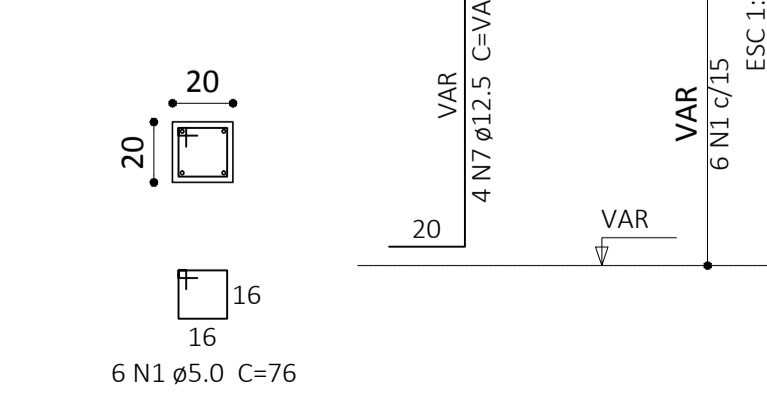
P9-P10  
ARQUIBANCADA - L2  
ESC 1:25



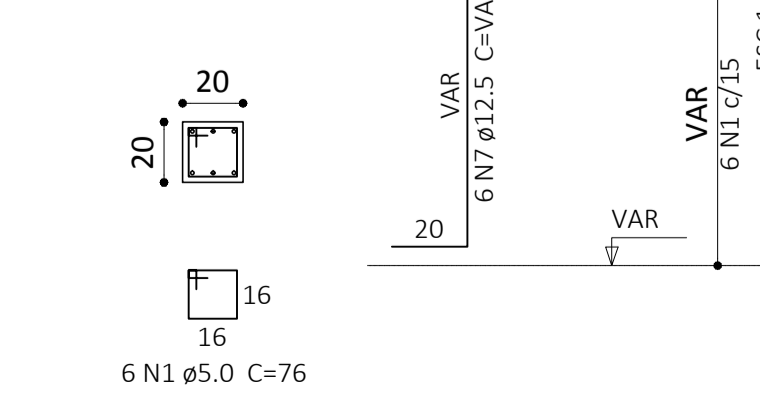
P1=P2=P3=P4=P5=P6  
BALDRAME - L1  
ESC 1:25



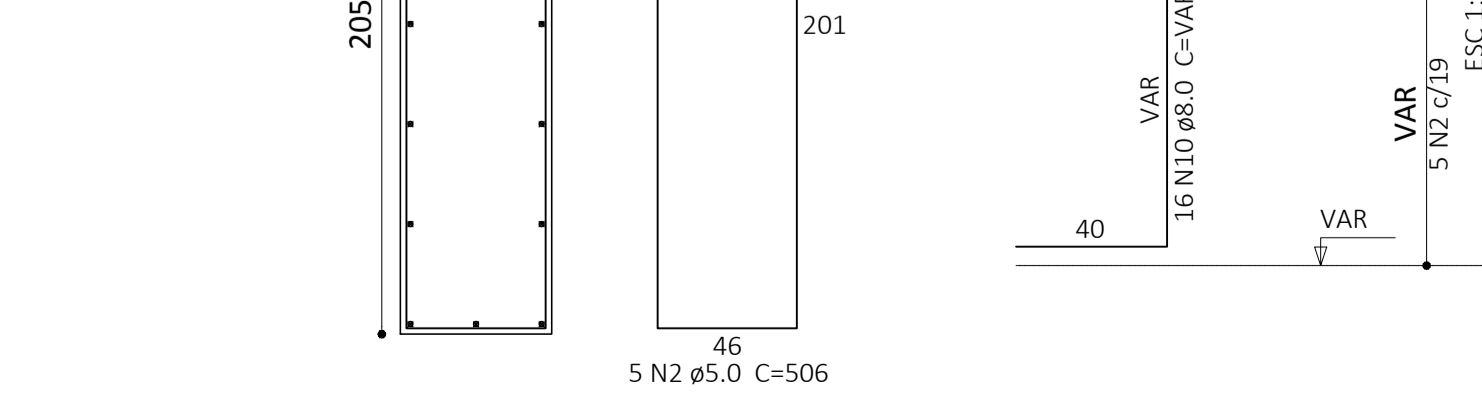
BALDRAME - L1  
ESC 1:25



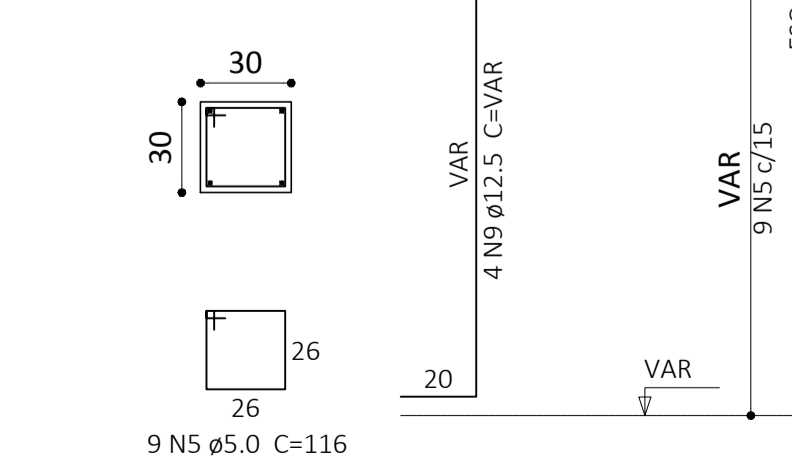
BALDRAME - L1  
ESC 1:25



P13  
BALDRAME - L1  
ESC 1:25



P14+P15+P16+P17  
BALDRAME - L1  
ESC 1:25



Relação do aço

P1 P2 P3 P4 P5 P6 P7 P8 P9 P10 P11 P12 P13 P14 P15 P16 P17					
AÇO	N	DIAM	Q	UNIT (cm)	C.TOTAL (cm)
CA60	1	5.0	172	76	13072
	2	5.0	5	506	2530
	3	5.0	5	215	1075
	4	5.0	40	60	2400
	5	5.0	36	116	4176
CA50	6	12.5	24	VAR	VAR
	7	12.5	28	VAR	VAR
	8	12.5	28	418	11704
	9	12.5	16	VAR	VAR
	10	8.0	16	VAR	VAR

Resumo do aço

AÇO	DIAM	C.TOTAL (m)	BARRAS + 10% (unid)
CA50	12.5	277.3	24
CA60	5.0	231.5	22
	8.0	25.0	3

Vol. de concreto total (C-25) = 2.03 m³  
Área de forma total = 25.2 m²

OBS:

PREFEITURA:	INSS
ASS. RESPONSÁVEL TÉCNICO:	ASS. PROPRIETÁRIO (a):
FERRARI ARQUITETURA & ENGENHARIA CNPJ: 26.722.884/0001-00	PREFEITURA MUNICIPAL DE RODEIO CNPJ: 83.102.814/0001-44

<b>PREFEITURA MUNICIPAL DE RODEIO</b>	
GINÁSIO DE ESPORTE	ESCALA 1/50
Rua Erwin Pacher, Bairro Rodeio 12, Rodeio/SC	DATA Setembro/2017
ARQUITETURA & ENGENHARIA	ARQUIVO PMR.DWG
FOLHA <b>05</b>	FOLHA 07



ARQUIBANCADA  
FORMA DO BALDRAME  
SAPATAS E PILARES

ESTRUTURAL